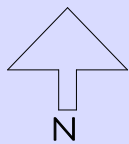
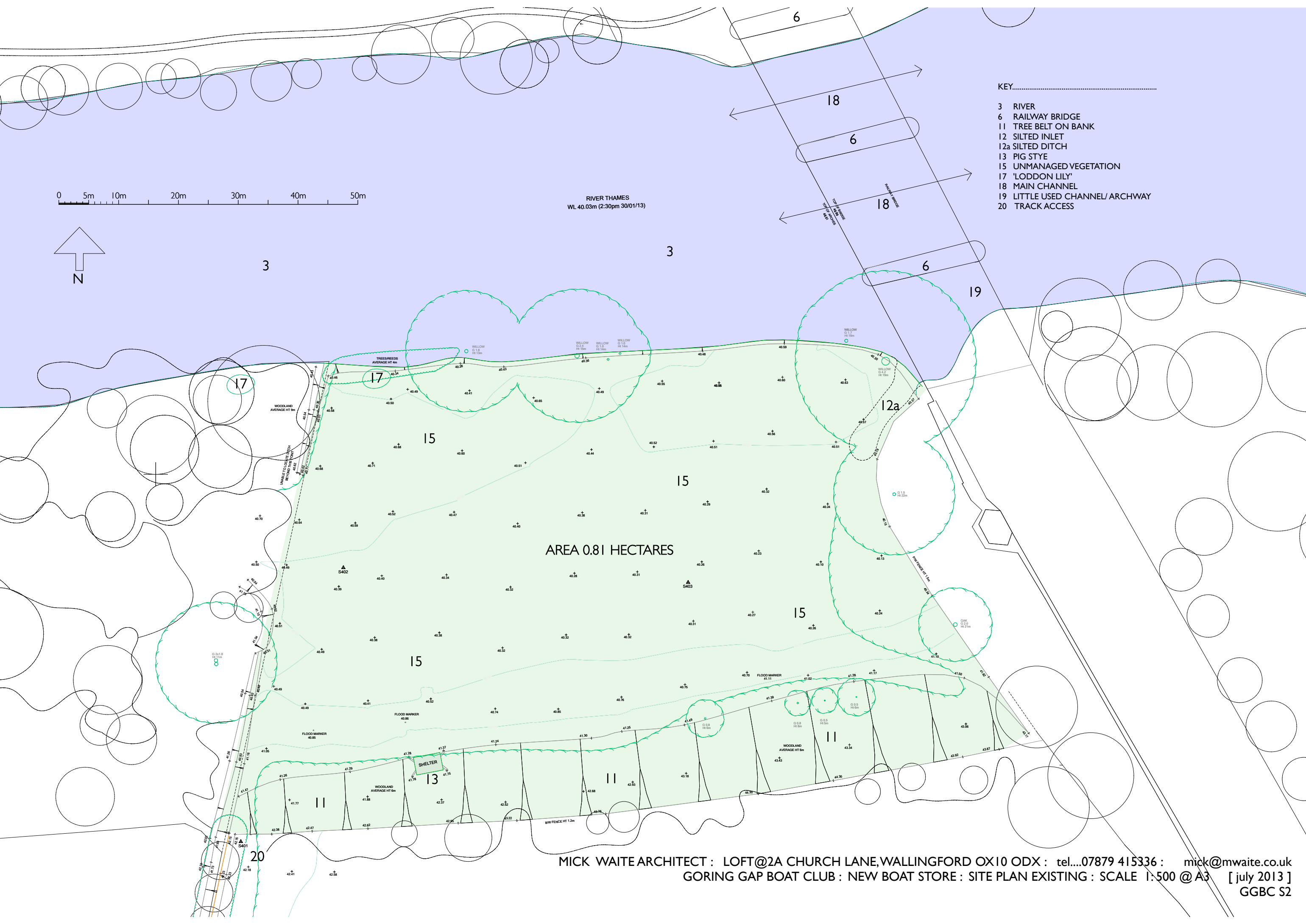


0 5m 10m 20m 30m 40m 50m



RIVER THAMES
WL 40.03m (2:30pm 30/01/13)

- KEY.....
- 3 RIVER
 - 6 RAILWAY BRIDGE
 - 11 TREE BELT ON BANK
 - 12 SILTED INLET
 - 12a SILTED DITCH
 - 13 PIG STYE
 - 15 UNMANAGED VEGETATION
 - 17 'LODDON LILY'
 - 18 MAIN CHANNEL
 - 19 LITTLE USED CHANNEL/ ARCHWAY
 - 20 TRACK ACCESS



AREA 0.81 HECTARES