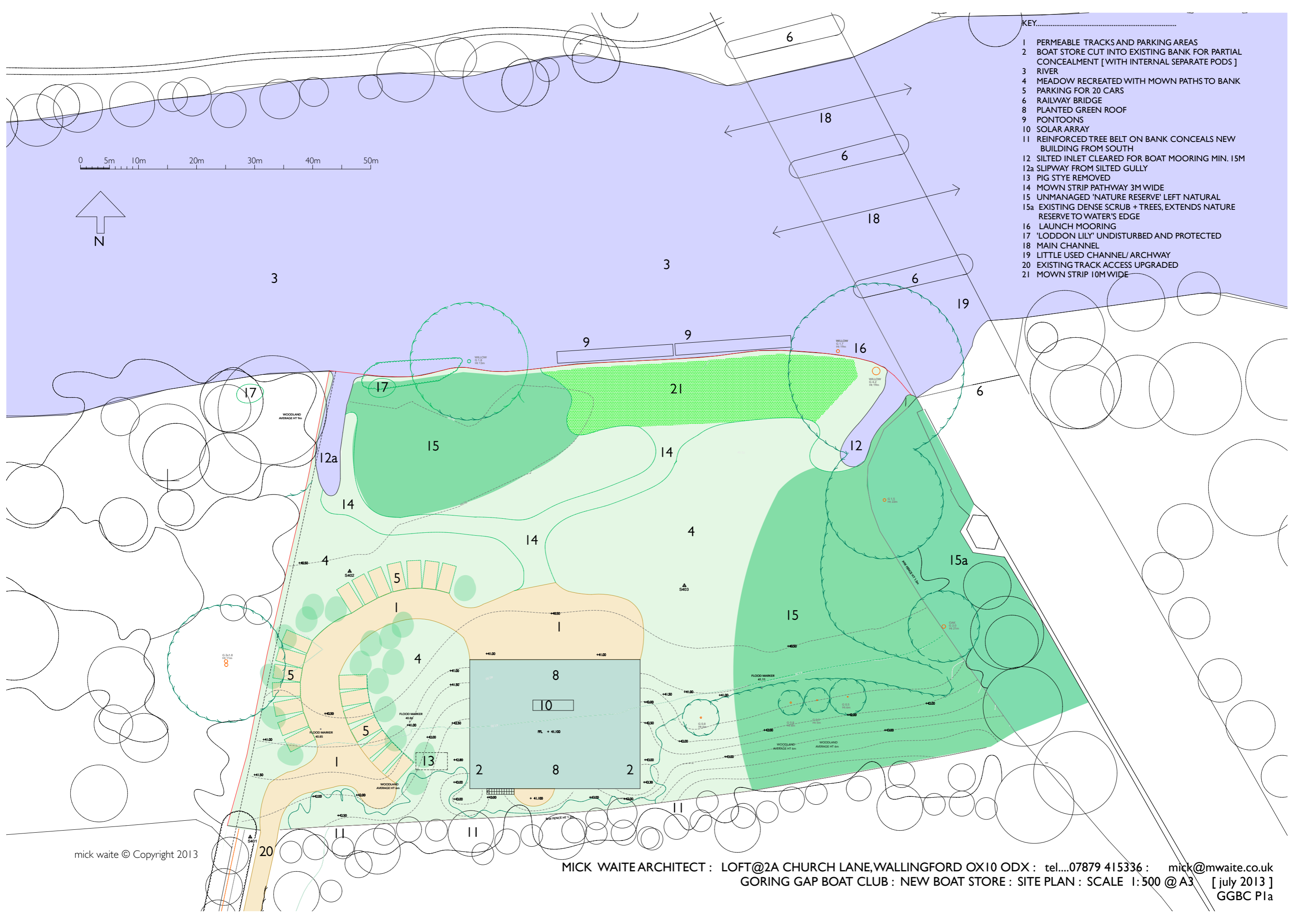
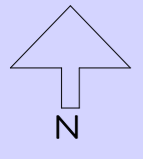


- KEY.....
- 1 PERMEABLE TRACKS AND PARKING AREAS
  - 2 BOAT STORE CUT INTO EXISTING BANK FOR PARTIAL CONCEALMENT [ WITH INTERNAL SEPARATE PODS ]
  - 3 RIVER
  - 4 MEADOW RECREATED WITH MOWN PATHS TO BANK
  - 5 PARKING FOR 20 CARS
  - 6 RAILWAY BRIDGE
  - 8 PLANTED GREEN ROOF
  - 9 PONTOONS
  - 10 SOLAR ARRAY
  - 11 REINFORCED TREE BELT ON BANK CONCEALS NEW BUILDING FROM SOUTH
  - 12 SILTED INLET CLEARED FOR BOAT MOORING MIN. 15M
  - 12a SLIPWAY FROM SILTED GULLY
  - 13 PIG STYE REMOVED
  - 14 MOWN STRIP PATHWAY 3M WIDE
  - 15 UNMANAGED 'NATURE RESERVE' LEFT NATURAL
  - 15a EXISTING DENSE SCRUB + TREES, EXTENDS NATURE RESERVE TO WATER'S EDGE
  - 16 LAUNCH MOORING
  - 17 'LODDON LILY' UNDISTURBED AND PROTECTED
  - 18 MAIN CHANNEL
  - 19 LITTLE USED CHANNEL/ ARCHWAY
  - 20 EXISTING TRACK ACCESS UPGRADED
  - 21 MOWN STRIP 10M WIDE



mick waite © Copyright 2013

MICK WAITE ARCHITECT : LOFT@2A CHURCH LANE, WALLINGFORD OX10 ODX : tel...07879 415336 : mick@mwaite.co.uk  
 GORING GAP BOAT CLUB : NEW BOAT STORE : SITE PLAN : SCALE 1:500 @ A3 [ july 2013 ]  
 GGBC Pla